

2015+ Ford F-150 Windshield Banner Kit

Installation Instructions
P/N: 422016 (R1115-03088)



2015+ F-150 Windshield Banner

Installation Instructions
P/N: 422016 (R1 1 15-03088)



Application: 2015+ Ford F-150

Important Note:

Before installing your ROUSH Performance Product, please read the installation manual and verify that all items are present. If you are missing hardware or have any questions, please contact ROUSH Performance at 1-800-59-ROUSH.

TABLE OF CONTENTS

Packing List for 2015+ F-150 Windshield Banner P/N: 422016 (R1115-03088).....	3
Equipment and Supplies Required.....	3
Limit of Liability Statement.....	3
Safety Precautions	3
Work Safely!	3
Installation	4

PACKING LIST FOR 2015+ F-150 WINDSHIELD BANNER R1115-03088

Description	Part Number	Quantity
2015+ F-150 ROUSH Windshield Banner	1115-03088	1
Website Instructions	1315-P1INST	1

EQUIPMENT AND SUPPLIES REQUIRED

- Plastic Squeegee
- Masking Tape
- Isopropyl Alcohol
- Terry Cloth
- Razor Blade

If you are missing any items, please call us toll free at 1-800-59-ROUSH.

LIMIT OF LIABILITY STATEMENT

The information contained in this publication was accurate and in effect at the time the publication was approved for printing and is subject to change without notice or liability. ROUSH Performance Products (RPP) reserves the right to revise the information presented herein or to discontinue the production of parts described at any time.

SAFETY PRECAUTIONS

CAREFULLY READ THE IMPORTANT SAFETY PRECAUTIONS and WARNINGS BEFORE PROCEEDING WITH THE INSTALLATION!

Appropriate disassembly, assembly methods and procedures are essential to ensure the personal safety of the individual performing the kit installation. Improper installation due to the failure to correctly follow these instructions could cause personal injury or death. Read each step of the installation manual carefully before starting the installation.

- Always wear safety glasses for eye protection.
- Place ignition switch in the OFF position.
- Always apply the parking brake when working on a vehicle.
- Block the front and rear tire surface to prevent unexpected vehicle movement.
- If working with a lift, always consult vehicle manual for correct lifting specifications.
- Operate the engine only in well-ventilated areas to avoid exposure to carbon monoxide.
- Do not smoke or use flammable items near or around the fuel system.
- Use chemicals and cleaners in well-ventilated areas.
- Batteries produce explosive gases, which can cause personal injury. Therefore, do not allow flames, sparks or flammable substances to come near the battery.
- Keeps hands and any other objects away from the radiator fan blades.
- Keep yourself and your clothing away from moving parts when the engine is running.
- Do not wear loose clothing or jewelry that can get caught in rotating parts or scratch surface finishes.
- Allow the engine, cooling system, brakes and exhaust to cool before working on a vehicle.

WORK SAFELY!

Perform this installation on a good clean level surface for maximum safety and with the engine turned off.

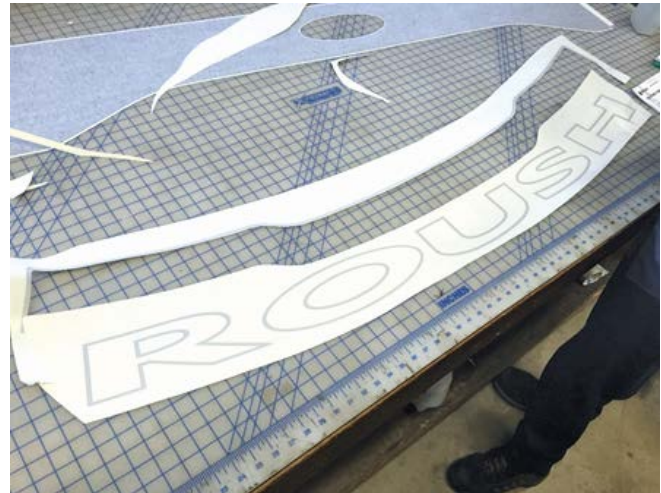
INSTALLATION

The following manual will guide you through the installation of the 2015+ F-150 ROUSH Windshield Banner (P/N: R1115-03088).

1. Clean the windshield well with isopropyl alcohol and a terry cloth to promote strong adhesion of the windshield banner to the windshield.



2. Trim the windshield banner with a razor blade along the top outline as shown.



3. Place the windshield banner onto the windshield and align the top edge of the banner with the top edge of the glass. Place a piece of masking tape vertically across the banner between the "O" and the "U" letters once it is in the correct position in order to hold it in place. Place another piece of tape at each of the outer ends to help maintain the correct alignment to the top edge of the glass.



4. Peel off the backing from the driver side of the banner up towards the masking tape and trim/tear the backing off as shown between the "O" and "U" letters.



5. Pull the portion of the windshield banner that has the backing removed back across the windshield while maintaining constant tension and alignment to the glass. Set the banner in place using the outer corners.

7. Carefully peel the outer covering off of the applied portion of the windshield banner but do not go past the line of masking tape.



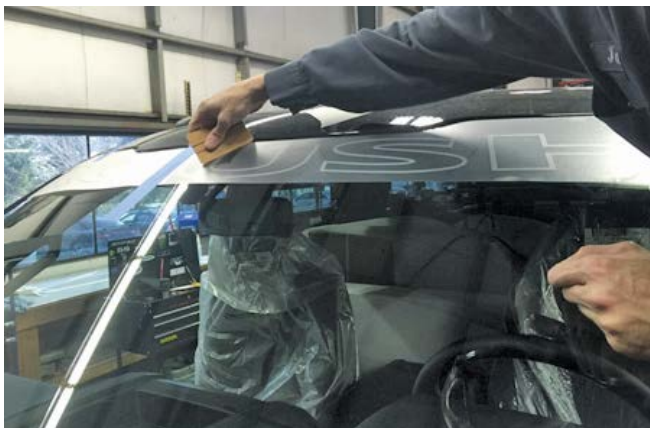
8. Remove the piece of masking tape that was applied in step 3 and peel off the remainder of the backing from the windshield banner.



6. Use a plastic squeegee and drag it from the center to the outer edges to apply the banner and release any air pockets. **Do not contact the banner directly across the trimmed edge of the backing as the exposed paper fibers may bond to the banner.**



9. Pull the remaining portion of the windshield banner back across the windshield while maintaining constant tension and alignment to the glass. Set the banner in place using the outer corners and then squeegee from the center to the outer edges to apply the banner and release any air pockets.





10. Carefully remove the rest of the outer covering from the banner.



11. Allow several hours of dry time before cleaning. **Never power wash or scrape the windshield banner or damage can occur.**

